

DRAWERS HEATED NUTS UNIT

CONTENTS

A	GENERAL INFORMATION	Page 2
A1	PRODUCT DESCRIPTION	Page 3
A2	TECHNICAL INFORMATION.....	Page 3
A3	TRANSPORTATION	Page 3
A4	UNPACKING	Page 3
B	INSTALLATION	Page 4
C	SAFETY INSTRUCTIONS.....	Page 5
D	OPERATION	Page 6
E	CLEANING & MAINTENANCE.....	Page 7
F	TROUBLESHOOTING	Page 8
G	SPARE PART LIST- EXPLODING DRAWING	Page 9
H	ELECTRIC CIRCUIT SCHEMA	Page 11

A GENERAL INFORMATION

Before installing the appliance, read operation and maintenance instructions carefully. Wrong installation and part changing may damage the product or may cause injury on people. These are not in our company's responsibility to damage the appliance intentionally, negligence, detriments because of disobeying instructions and regulations, wrong connections. Unauthorized intervention to appliance invalidates the warranty.

1. This instruction manual should be kept in a safe place for future reference.
2. **Installation should be made in accordance with ordinances and security rules of that country by a qualified service personnel.**
3. This appliance has to be used by trained person.
4. Please turn off the appliance immediately in the event of malfunction or failure. The appliance should be repaired only by authorized service personnel. Please demand original spare part.

DRAWERS HEATED NUTS UNIT

A1 PRODUCT DESCRIPTION

*The Professional Tea Maker ,that provides high efficiency has been designed to be used in industrial kitchens.

Product Code	Dimensions (mm)	Weight (kg)	Packaging Dimensions (mm)
EMP.KU.01	340x380x450	11	
EMP.KU.02	500x380x450	15	

A2 TECHNICAL INFORMATION

Product Code	Capacity (Drawers)	Power (Kw)	Operating Voltage (V)	Cable (mm ²)	Fuse (A)
EMP.KU.01	4	0,10	220	3x1,5	16
EMP.KU.02	6	0,10	220	3x1,5	16

A3 TRANSPORTATION

*This appliance can be moved by hand from area to area.Do not crash and drop the appliance while transporting.

A4 UNPACKING

*Please unpack the package according to the security codes and ordinances of current country and get rid from the pack.Parts which contacts with food are produced by stainless steel.All plastic parts are marked by material's symbol.

*Please check that all the parts of appliance had come completely and if they are damaged or not during the shipping.


B INSTALLATION

*Please place the product to straight and sturdy ground, please take necessary steps against possibility of overturn.

*Technician who will serve for installation and service for the appliance must be professional on this subject and must have installation and service licenses by the company.

*Connection to Electric Power Supply must be done by authorized person.

*Please be sure that the voltage connected to appliance must be equal with the voltage which is on appliance's label.

 This appliance must be connected to an earthed outlet in accordance with safety rules and standards.

*Appliance's earthing must be connected to earthing line on panel which is nearest to electric installation.

*Connection to the main fuse and leak current fuse must be done in accordance with the current regulations.

DRAWERS HEATED NUTS UNIT

C SAFETY INSTRUCTIONS



*Do not use the appliance in insufficient lighted place.



*Do not install the appliance in the presence of flammable or explosive materials.



*Do not operate the appliance when the machine is empty.



*Do not load so less or more than appliance's capacity.



*Do not attempt to use the appliance without suitable protective equipments.



*Because of any reason if there is a fire or flame flare where the appliance is used, turn off all gas valves and electric contactor switch quickly and use fire extinguisher. Never use water to extinguish the fire.



*All the damages because of not having earthing connection will not be on warranty.

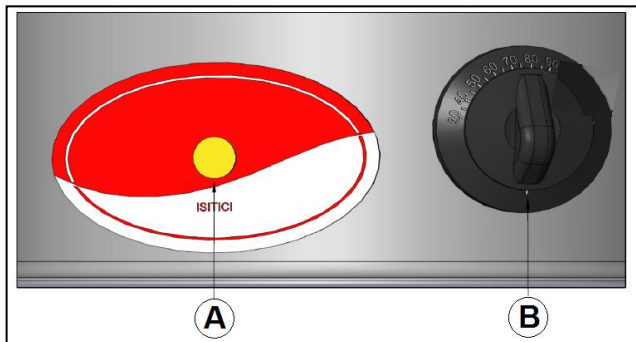


*Do not interfere the appliance with conductive or insulator material (etc: spoon) while the appliance is operating.



*Always keep it where the children can not reach.

DRAWERS HEATED NUTS UNIT

D OPERATION***Control Panel;**

A : Indicator Lamp
B : Thermostat Button

***Operating;**

- ³⁵₁₇ Fill the drawers with cookies to capacity.
- ³⁵₁₇ Turn the thermostat knob to 80-90°C and start the device.
- ³⁵₁₇ The lamp (red led) indicating that the heater is working will turn on.
- ³⁵₁₇ After you are done with the device, unplug it from the socket.

DRAWERS HEATED NUTS UNIT

E CLEANING & MAINTENANCE

□ **CLEANING AND MAINTENANCE AFTER EVERY USE**

- ³⁵₁₇ Always turn off the appliance and disconnect from the power supply before cleaning.
- ³⁵₁₇ Clean the outer surface of the appliance with moist cloth and chrome shiner.
- ³⁵₁₇ Do not use abrasive cleaning chemicals as these can leave harmful residues.
- ³⁵₁₇ Do not clean the appliance by spraying water directly, otherwise electric motor may get damaged.

□ **PERIODIC CLEANING AND MAINTENANCE**

- ³⁵₁₇ Maintenance should be done by qualified person.
- ³⁵₁₇ Get the periodic maintenance of the appliance once in every 15 days.
- ³⁵₁₇ Maintenance of the appliance's should be done by compressed air according to frequency of use.



DRAWERS HEATED NUTS UNIT

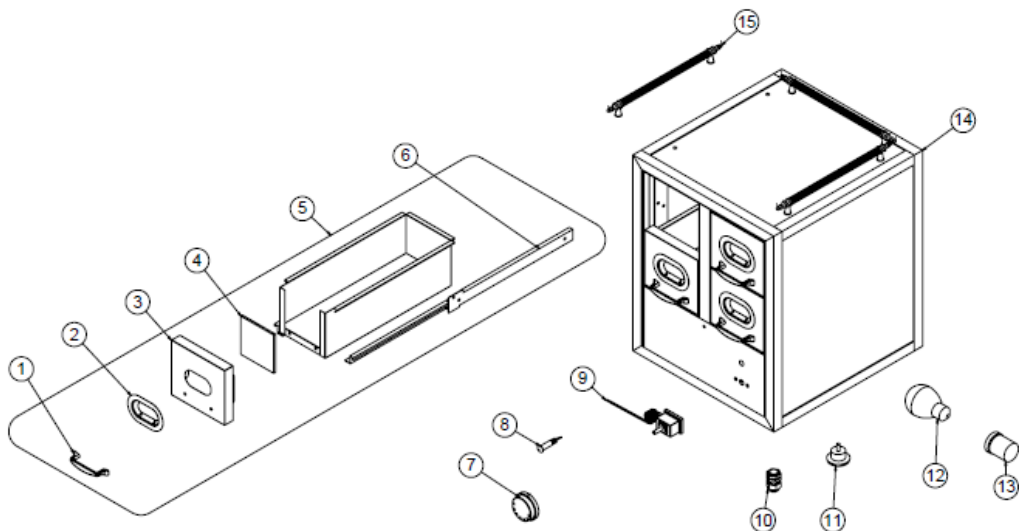
F TROUBLESHOOTING

THE APPLIANCE DOESN'T OPERATE	<ol style="list-style-type: none">1. Check if the appliance is plugged in.2. Check the electrical connections and voltage.
THE APPLIANCE IS NOISY	<ol style="list-style-type: none">1. If the thermostat button of the device is broken, the heating process will be continuous. Please check.
THE APPLIANCE STOPPED	<ol style="list-style-type: none">1. The appliance can stop due to low voltage. In this situation check the voltage.
THE APPLIANCE DOESN'T HEAT THE	<ol style="list-style-type: none">1. Cookies do not heat up if the device's bulb is blown.
<div><div><div>35</div><div>17</div></div><div>If heating is not done at suitable quality</div></div> <div><div><div>35</div><div>17</div></div><div>If any function of security doesn't work</div><div><input type="checkbox"/> Do not use the appliance.</div></div>	

***If these problems are still going on, contact with our authorized services.**

DRAWERS HEATED NUTS UNIT

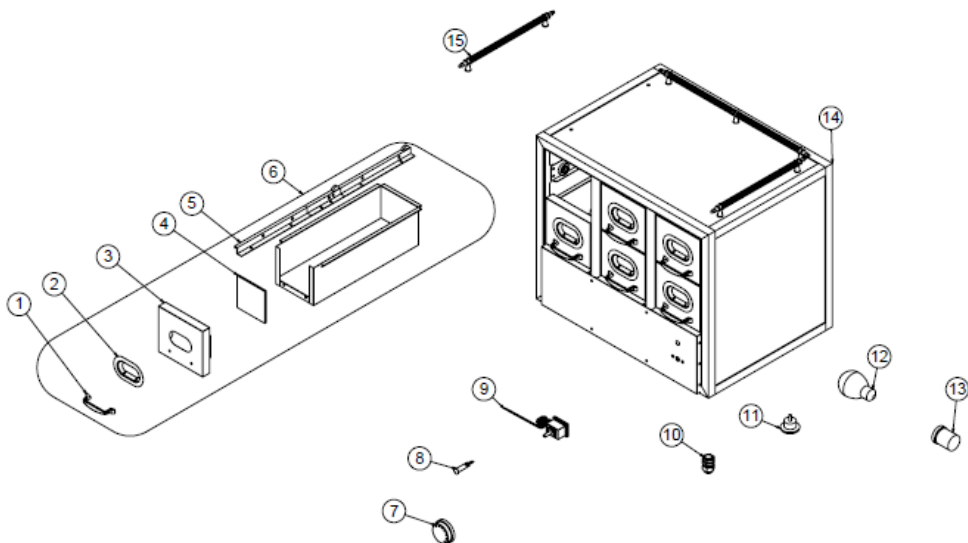
G SPARE PART LIST-EXPLODING DRAWING



PRODUCT CODE: EMP.KU.01		
NO	PRODUCT NAME	P.CODE
1	HANDLE	M.MUH-116
2	DRAWERCOVER SHEET	M.MUH-116
3	FRONT DRAWERSHEET	YSC-GST.KU-LZ-0024
4	DRAWERGLASS	YSC-GST.KU-LZ-0006
5	DRAWER	M.CAM-GST-001
6	30 CM DRAWERRAY EQUIP	ARA-GST.KU-0001
7	BEIN MARIE BUTTON (30-90)	M.AKS-RAY-004
8	RED SIGNAL LAMP	M.AKS-DGM-001
9	30-90 THERMOSTAT	GST.M.ELK-LMB-SNY-003
10	PG-11 CABLE FITTING	GST.M.ELK-MEK-TRM1-003
11	3X1 CABLE	GST.M.ELK-RKR-PLS-003
12	PLASTIC FOOT	GST.M.ELK-PWR-PBK-001
13	230 P 100BT LAMP	M.AKS-AYK-PLS-005
14	E-27 PORCELAIN DUY	M.ELK-LMB-AMP-012
15	CHASSIS	GST.M.ELK-LMB-DUY-002
16	BALCON HANDLE	-

DRAWERS HEATED NUTS UNIT

G SPARE PART LIST-EXPLODING DRAWING

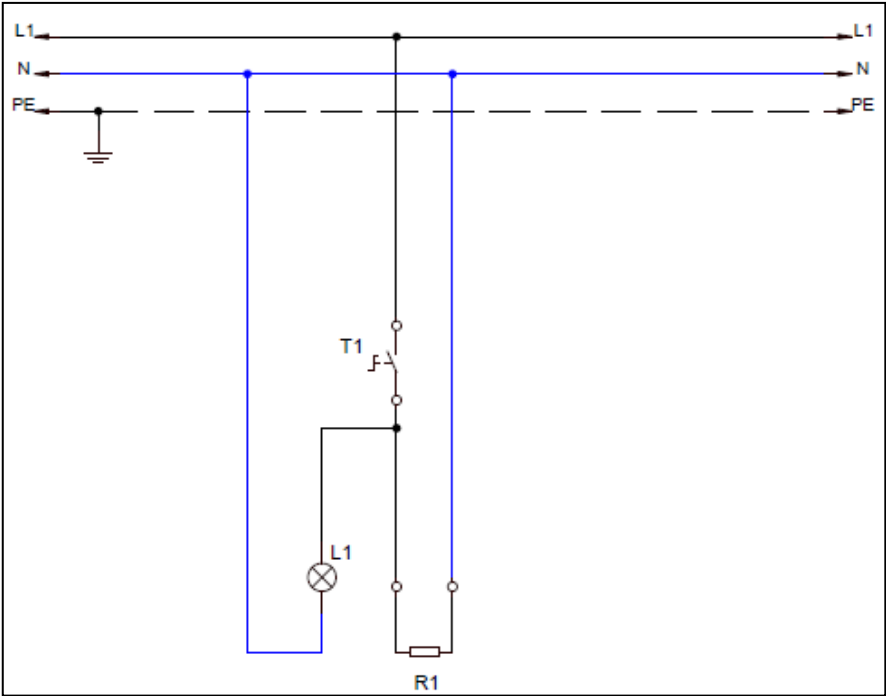


PRODUCT CODE: EMP.KU.02

NO	PRODUCT NAME	P.CODE
1	HANDLE	M.MUH-116
2	DRAWERCOVER SHEET	M.MUH-116
3	FRONT DRAWER SHEET	YSC-GST.KU-LZ-0024
4	DRAWERGLASS	YSC-GST.KU-LZ-0006
5	30 CM DRAWERRAY EQUIP	M.CAM-GST-001
6	DRAWER	M.AKS-RAY-004
7	BEIN MARIE BUTTON (30-90)	ARA-GST.KU-0001
8	RED SIGNAL LAMP	M.AKS-DGM-001
9	30-90 THERMOSTAT	GST.M.ELK-LMB-SNY-003
10	PG-11 CABLE FITTING	GST.M.ELK-MEK-TRM1-003
11	3X1 CABLE	GST.M.ELK-RKR-PLS-003
12	PLASTIC FOOT	GST.M.ELK-PWR-PBK-001
13	LAMP	M.AKS-AYK-PLS-005
14	E-27 PORCELAIN DUY	M.ELK-LMB-AMP-012
15	CHASSIS	GST.M.ELK-LMB-DUY-002
16	BALCONY HANDLE	-

DRAWERS HEATED NUTS UNIT

H ELECTRIC CIRCUIT SCHEMA



PRODUCT CODE	KW
EMP.KU.01 – EMP.KU.02	0,10

T	R1	L1
Thermostat (30-90°C)	lamp 0,10 W (220V)	Thermostat Signal Lamp