

TILTING PAN (GAS)

CONTENTS

A	GENERAL INFORMATION.....	Page 2
A1	PRODUCT DESCRIPTION	Page 3
A2	TECHNICAL INFORMATION	Page 3
A3	TRANSPORTATION	Page 4
A4	UNPACKING	Page 4
B	INSTALLATION	Page 4
C	SAFETY INSTRUCTIONS.....	Page 5
D	OPERATION	Page 6
E	CLEANING & MAINTENANCE	Page 7
F	TROUBLESHOOTING	Page 8
G	INJECTOR CHANGE AND GAS SETTING	Page 9
H	GAS CONNECTION IMAGES	Page 10
I	SPARE PART LIST- EXPLODING DRAWING.....	Page 12

A GENERAL INFORMATION

Before installing the appliance, read operation and maintenance instructions carefully. Wrong installation and part changing may damage the product or may cause injury on people. These are not in our company's responsibility to damage the appliance intentionally, negligence, detriments because of disobeying instructions and regulations, wrong connections. Unauthorized intervention to appliance invalidates the warranty.

1. This instruction manual should be kept in a safe place for future reference.
2. **Installation should be made in accordance with ordinances and security rules of that country by a qualified service personnel.**
3. This appliance has to be used by trained person.
4. Please turn off the appliance immediately in the event of malfunction or failure. The appliance should be repaired only by authorized service personnel. Please demand original spare part.

TILTING PAN (GAS)

A1 PRODUCT DESCRIPTION

*The Professional Tilting Pans ,that provides high efficiency has been designed to be used in industrial kitchens.

Product Code	Dimensions (mm)	Weight (kg)	Packaging Dimensions (mm)
EMP.PLS.DTG.120	800x730x850	116	920x830x1160
EMP.PLS.DTG.80	800x900x850	145	840x1040x1160
EMP.PLS.DTG.50	1200X900X850	193	1280X1140XX1120

A2 TECHNICAL INFORMATION

Product Code	Capacity (lt)	Power NG (KW)	Gas Consumption (NG)	Power LPG (KW)	Gas Consumption (LPG)
EMP.PLS.DTG.50	50	11,20	1,18	8,7	0,68
EMP.PLS.DTG.80	80	11,20	1,18	12,5	0,98
EMP.PLS.DTG.120	120	16,10	1,70	15,5	1,21

A3 TRANSPORTATION

*This appliance can not be moved by hand from area to area. It must be moved on pallet with forklift truck.

A4 UNPACKING

*Please unpack the package according to the security codes and ordinances of current country and get rid from the pack. Parts which contacts with food are produced by stainless steel. All plastic parts are marked by material's symbol.

*Please check that all the parts of appliance had come completely and if they are damaged or not during the shipping.

B INSTALLATION

*Please place the product to straight and sturdy ground, please take necessary steps against possibility of overturn.

*Technician who will serve for installation and service for the appliance must be professional on this subject and must have installation and service licenses by the company.

*Connection to Gas Fitment must be done by authorized person.

*The area where the appliance is must have enough ventilation and vent-hole.

*The appliance must be connected correctly according to local and national gas standards of your country.

*The appliance gas entrances are indicated with "G" label on the body.










*Connection to gas fitment must be done with suitable diameter metal flex pipe and spheric valve. The spheric valve must be immobilized to a place that is far away from heat and accessible during the danger. After gas entrance connection done, gas leakages must be checked.

*According to the datas on appliance information plate, gas and pressure must be adjusted. If the gas type that is adjusted is not the suitable with gas type that is at installation place, apply the instructions that is about adjustment of different gas type. **(Event :G)**

*If the location where tilting pans placed is covered with nonflammable heat insulation material, the distance between them must be 5 cm. Otherwise it should be at least 20 cm. The appliance shouldn't be operated under chimney hood.

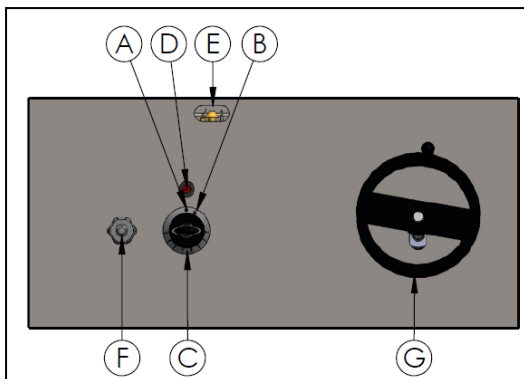
TILTING PAN (GAS)

C SAFETY INSTRUCTIONS

-  *Do not use the appliance in insufficient lighted place.
-  *Do not touch the moving attachments while the appliance operates.
-  *Do not install the appliance in the presence of flammable or explosive materials.
-  *Do not operate the appliance when the machine is empty.
-  *Do not load so less or more than appliance's capacity.
-  *Do not attempt to use the appliance without suitable protective equipments.
-  *Because of any reason if there is a fire or flame flare where the appliance is used, turn off all gas valves and electric contactor switch quickly and use fire extinguisher. Never use water to extinguish the fire.
-  *If there is gas leakage where the appliance is, do not fire absolutely and do not use electric.
-  *Definitely do not allow to check the sealing with flame.

D OPERATION

*Control Panel;



- A : OFF position
- B : Lighter position
- C : Heat setting button
- D : Lighter
- E : Flame observing hole
- F : Water valve
- G : Lifting ring

*Operating;

- According to type of use,make gas entrance connection from behind the grill.Because the machine is operated with LPG and NG.
- Turn on the gas valves.
- Press the button at Pilot position before firing to remove the air from gas fitment during first operation.
- Press the appliance's gas control valve slowly and turn it to left.Provide the gas flow to the pilot by keeping it pressed.
- Fire the pilot.
- In order to see the pilot and the flame at burner,observe it from flame observation hole that is at the appliance's front panel.
- After the pilot is fired,provide the burner to burn by turning gas control valve to clockwise.
- Provide the cooking pan to be placed smoothly.
- Get ready the materials that are desired to be cooked,before the operation.
- Put the materials on the pan and start to cook.
- Add water to cooked food through the upper tap of the pan.
- Close the appliance's lid.
- Provide the pan to be at side position and evacuate the cooked foods.
- After the operation is completed,turn off the gas valve.

TILTING PAN (GAS)

E CLEANING & MAINTENANCE

➤ **CLEANING AND MAINTENANCE AFTER EVERY USE**

- Turn off the gas connection before cleaning.
- Clean the outer surface of the appliance, cooking pan and lid with a moist cloth.
- Do not use abrasive cleaning chemicals as these can leave harmful residues.
- Do not wash the appliance with pressure water.
- Do not clean the appliance with a materials that may damage chrome material.
- Pay attention the pilot group not to contact with water during use and cleaning.

➤ **PERIODIC CLEANING AND MAINTENANCE**

- Maintenance should be done by qualified person.
- These parts ; Gas storage, pilot, thermocouples, taps, burner, lighter and spark plug cable are not maintained so they need to be changed when they have error.
- Check the gas connection hoses in periodic time. If there is slit, hole..etc, change the hoses.
- Ventilate the area where the device is in periodic times.

F TROUBLESHOOTING**THE APPLIANCE DOESN'T OPERATE**

1. Check if the gas connection is done or not.
2. If there is no gas entrance to pilot,the appliance is not operated.
3. Check if the injector holes are opened or not.
4. If the hoses that have gas entrance lose gas due to slit,hole.etc.,the appliance is not operated.

THE MEATS ARE NOT COOKED WELL

1. Check if it is operated at suitable gas setting or not.
2. Do not overload the cooking pan.

THE APPLIANCE STOPPED

1. The appliance's thermostat control stops the gas automatically,when it reaches desired temperature.
2. If the flame is out involuntarily during the operation,safety valve will stop the gas automatically through the agency of thermostat.

- If cooking at tilting pans is not done at suitable quality
- If any function of security doesn't work
 - Do not use the appliance.

***If these problems are still going on,contact with our authorized services.**

TILTING PAN (GAS)

G INJECTOR CHANGE AND GAS SETTING

GAS TILTING PANS BURNER-INJECTOR CHANGE CHART

NG / LPG		EMP.PLS.DTG.50		EMP.PLS.DTG.80		EMP.PLS.DTG.120	
		Ø mm	X	Ø mm	X	Ø mm	X
2	G20	Ø 2,50	1x	Ø 2,50	1x	Ø 3,00	1x
	G25	Ø 2,50	1x	Ø 2,50	1x	Ø 3,00	1x
3	G30	30 mbar	Ø 1,50	1x	Ø 1,80	1x	Ø 2,00
		50 mbar	Ø 1,50	1x	Ø 1,80	1x	Ø 2,00
	G31	37 mbar	Ø 1,50	1x	Ø 1,80	1x	Ø 2,00
		30 mbar	Ø 1,50	1x	Ø 1,80	1x	Ø 2,00

Change of Burner Injector

1. Rip off the injector at the entrance of burner with a suitable tool.
2. Change A injector by paying attention to the datas at chart with suitable injector. (Image 1)
3. Adjust the burner entrance setting (F) by loosening 'B' bolt and moving the valve to forward-back. (Image 2)
4. Change C injector by paying attention to the datas at chart with suitable injector. For this it is enough to take off 'D' fitting and pull the gas pipe to down. (Image 3)

H GAS CONNECTION IMAGES

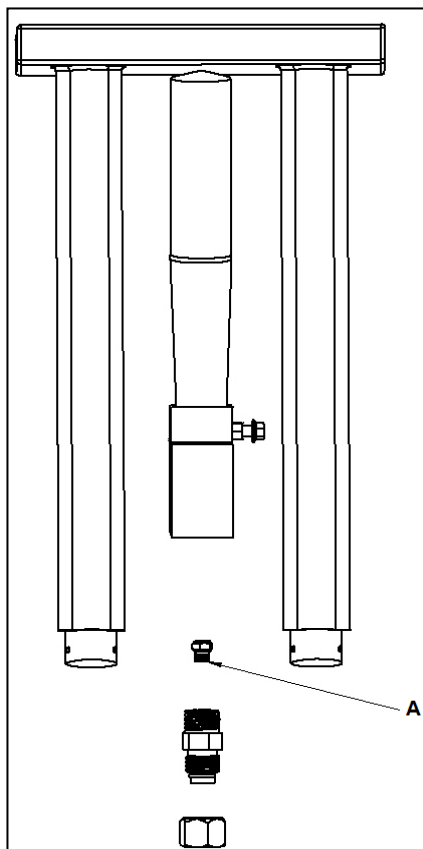


Image 1

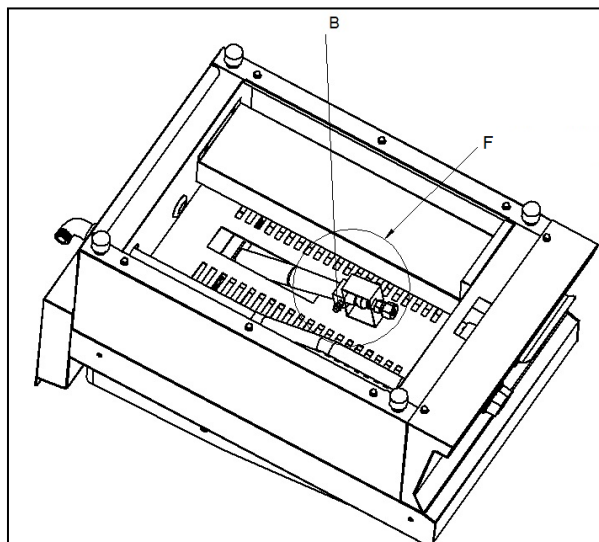


Image 2

TILTING PAN (GAS)

H GAS CONNECTION IMAGES

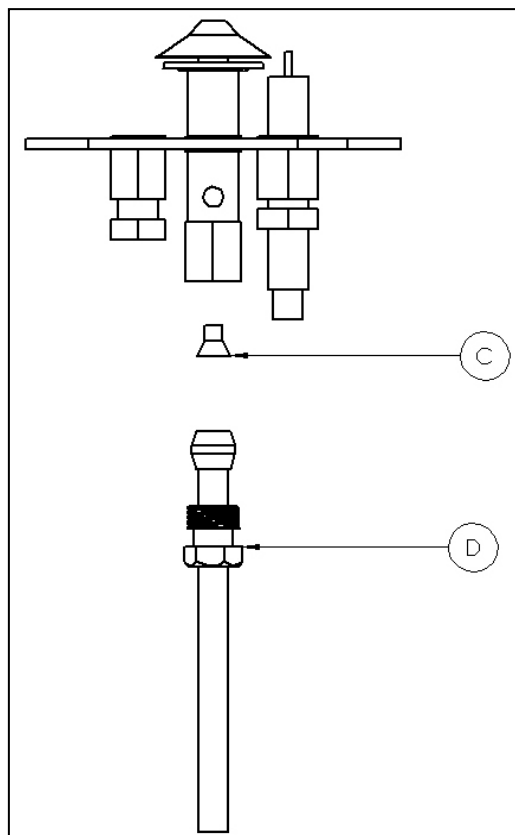
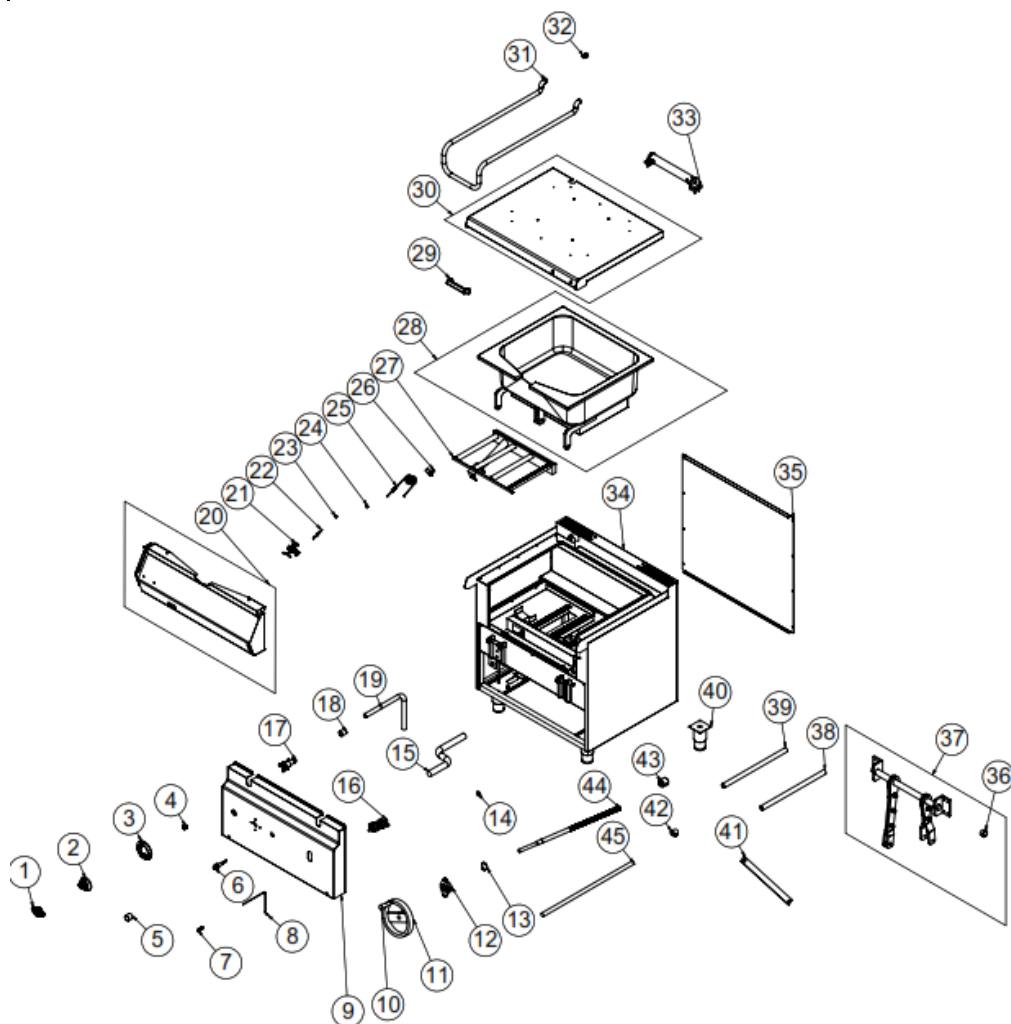


Image 3

SPARE PART LIST-EXPLODING DRAWING



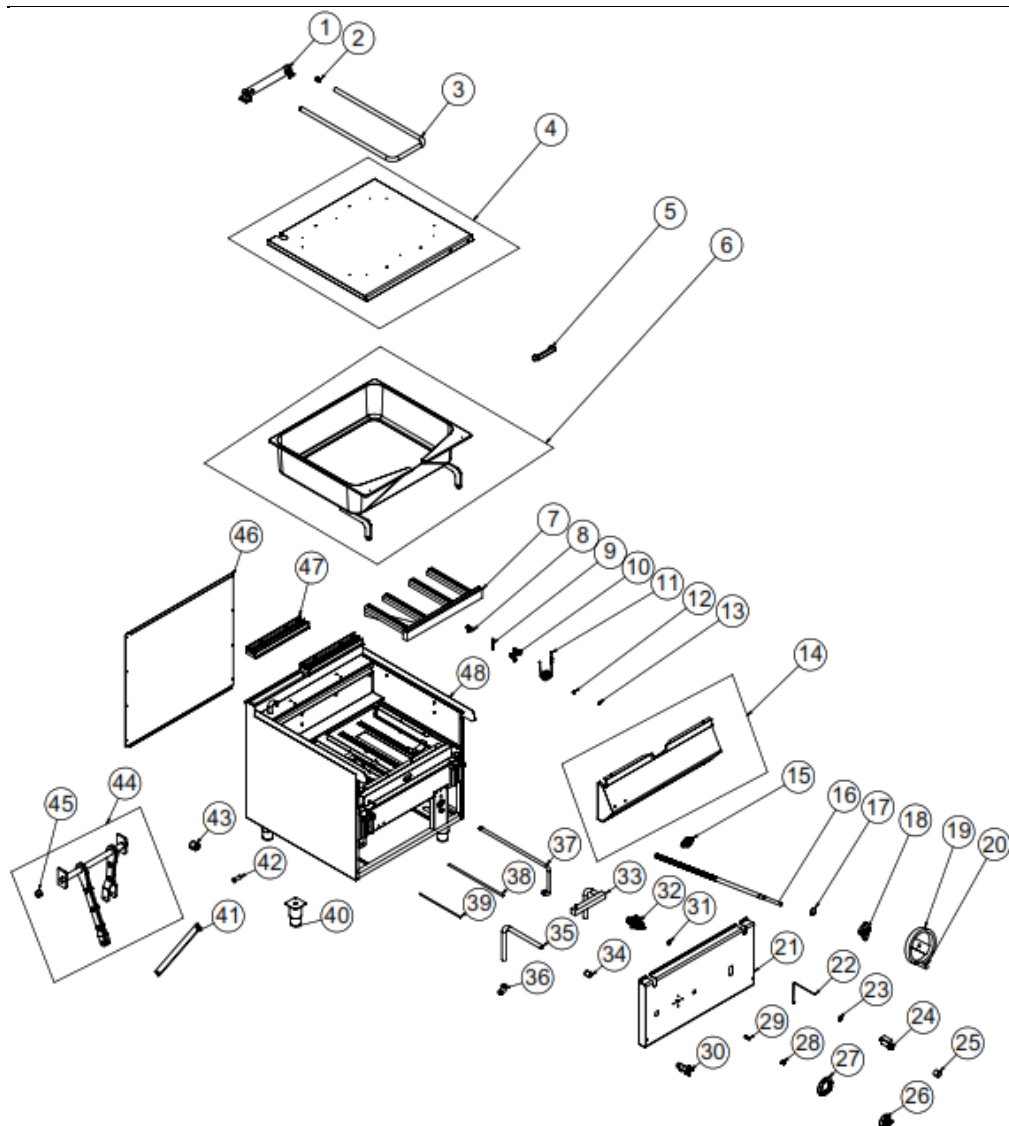
EMP.PLS.DTG.50

TILTING PAN (GAS)

I SPARE PART LIST-EXPLODING DRAWING

PRODUCT CODE- EMP PLS DTG 50		
NO	PRODUCT NAME	P CODE
1	TICKET	M.AKS-OZL-MTL-006
2	BUTTON	M.AKS-DGM-EMP-024
3	1-8 BUTTON BUMPER	M.AKS-DGM-EMP-020
4	BUTTON SOCKET 8 MM	M.AKS-DGM-SKT-001
5	LIGHTER GUARD	M.GAZ--PIEZ-KRM
6	BATTERY LIGHTER	M.GAZ-CKM-PIL-001
7	M4 FRAME SPRING	M.YAY-PG-004
8	CABLE 1000MM	M.GAZ-CKM-KBL-002
9	FRONT COVER SHEET	YSC-KNX.PG7-LZ-0470
10	TILTING ARM	M.AKS-KLP-END-004
11	TILTING ARM	M.AKS-KLP-DTG-001
12	BEARING UCFL 204 RHB	M.RLM-YRL-001
13	471/15 RING	M.AKS-SKM-001
14	GASKET	M.CNT-PLS-KLN-002
15	GAS TANK	M.GAZ-DPO-PG-090
16	THERMOSTATIC GAS VALVE	M.GAZ-VNA-PEL-001
17	FAUCET	M.MEK-TES-MSL-003
18	MASON 1/2	M.MEK-TES-INX-002
19	INSTALLATION PIPE 500 MM	YBR-KNX.DTG-KS-0003
20	FRONT PANEL	ARA-KNX.PG7-0016
21	PILOT GROUP	M.GAZ-CKM-BUJI-002
22	M4 Spark Plug	M.GAZ-CKM-KBJI-003
23	INJECTOR M8*0.75 Ø 1.50 MM.	JP.M.GAZ-ENJ-LPG-012
24	INJECTOR M8*0.75 Ø2.00 MM.	M.GAZ-ENJ-NG-010
25	M8*1200 THERMOELEMENT NO:18	M.GAZ-TRL-003
26	3/8 16*1.5 M.8 0.75 L SHAPED PIPE	M.GAZ-TES-SRI-023
27	425.290*4P BURNER	M.GAZ-BRL-SMC-012
28	PAN	ARA-KNX.PG7-0015
29	NO:2 BAKALIT HANDLE	M.AKS-KLP-BKL-003
30	TOP COVER	ARA-KNX.PG7-0014
31	PIPE 1500MM	YBR-KNX.DTG-KS-0002
32	COVER HANDLE	YTL-KNX.KTG-KS-0003
33	MECHANISM KIT	M.MUH-013
34	CHASSIS	-
35	BACK SHEET METAL	YSC-KNX.PG7-PN-0442
36	BUSH	YTL-KNX.DTG-KS-0006
37	MECHANISM	ARA-KNX.PG7-0013
38	FLEXIABLE GAS PIPE Ø10 MM 30 CM 3/8	M.GAZ-TES-SPR-020
39	GAS FLEX Ø6 MM 60 CM	M.GAZ-TES-SPR-035
40	15 CM LEG	M.AKS-AYK-INX-001
41	CONEXION SHEET	YSC-KNX.DTG-LZ-0107
42	BRACKET	JP.M.GAZ-TES-GLV-002
43	MOVEMENT SHAFT NUT	YTL-KNX.DTG-KS-0003
44	MOVEMENT ARM Ø20	YTL-KNX.DTG-KS-0007
45	1/2-1/2 100 CM GAS FLEX	M.GAZ-TES-SPR-005

SPARE PART LIST-EXPLODING DRAWING

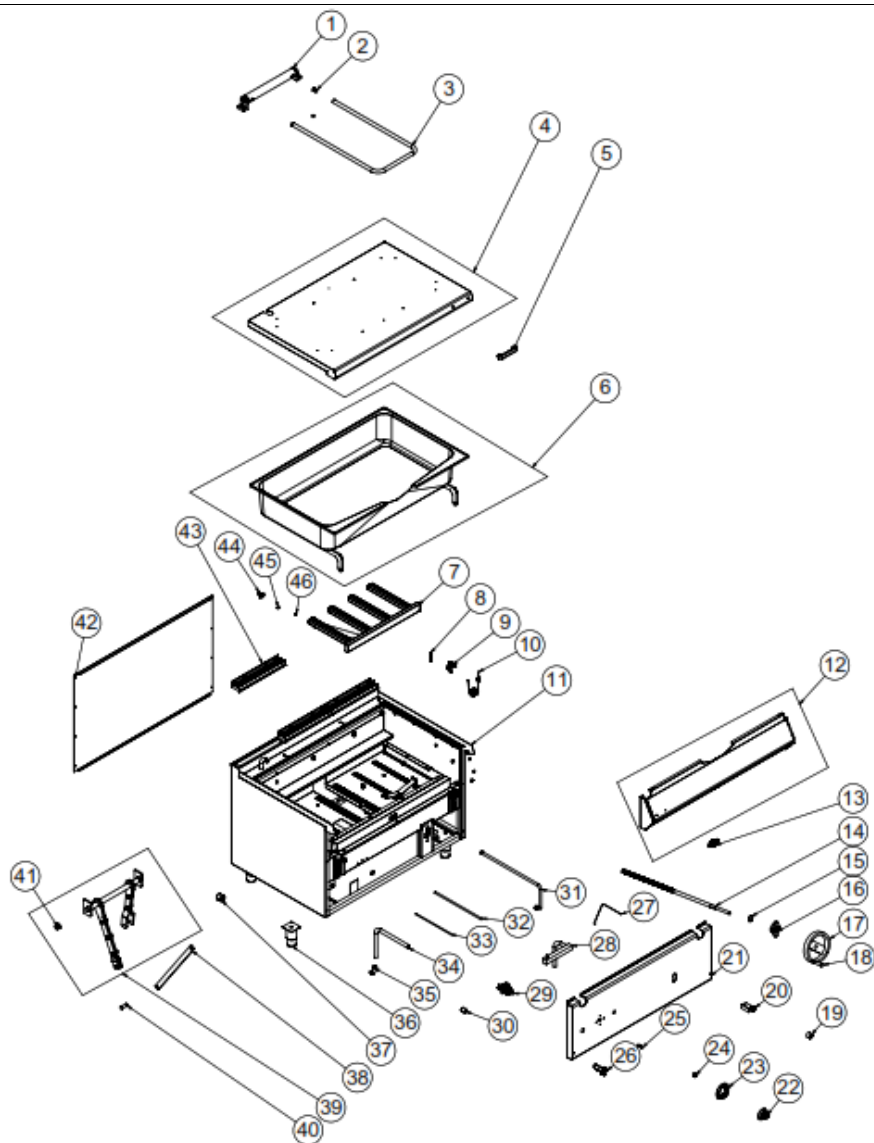


TILTING PAN (GAS)

I SPARE PART LIST-EXPLODING DRAWING

PRODUCT CODE: EMP.PLS.DTG.80		
NO	PRODUCT NAME	P.CODE
1	MECHANISM KIT	M.MUH-013
2	COVER HANDLE	YTL-KNX.KTG-KS-0003
3	PIPE 1700MM	YBR-KNX.DTG-KS-0007
4	TOP COVER	ARA-KNX.PG9-0038
5	NO:2 BAKALIT HANDLE	M.AKS-KLP-BKL-003
6	POOL	ARA-KNX.PG9-0037
7	520,455*6P BURNER	M.GAZ-BRL-SMC-009
8	3/8 16*1.5 M.8.0.75 L SHAPED PIPE	M.GAZ-TES-SRI-023
9	M4 Spark Plug	M.GAZ-CKM-KBJI-003
10	PILOT GROUP	M.GAZ-CKM-BUJI-002
11	M8*1200 THERMOELEMENT NO:18	M.GAZ-TRL-003
12	INJECTOR M8*0.75 Ø 1.80 MM.	M.GAZ-ENJ-NG-006
13	ENJEKTOR M8*0.75 Ø 2.50 MM.	M.GAZ-ENJ-NG-008
14	FRONT PANEL	ARA-KNX.PG9-0036
15	TICKET	M.AKS-OZL-MTL-006
16	MOVEMENT ARM	YTL-KNX.DTG-KS-0004
17	471/15 RING	M.AKS-SKM-001
18	BEARING UCFL 204 RHB	M.RLM-YRL-001
19	TILTING ARM	M.AKS-KLP-DTG-001
20	TILTING ARM	M.AKS-KLP-END-004
21	FRONT COVER SHEET	YSC-KNX.PG9-LZ-0488
22	CABLE 500MM	M.GAZ-CKM-KBL-004
23	LIGHTER WASHER	YSC-KNX.PG7-LZ-0557
24	BATTERY LIGHTER	M.GAZ-CKM-PIL-001
25	LIGHTER GUARD	M.GAZ-PIEZ-KRM
26	BUTTON	M.AKS-DGM-EMP-024
27	1-8 BUTTON BUMPER	M.AKS-DGM-EMP-020
28	BUTTON SOCKET 8 MM	M.AKS-DGM-SKT-001
29	M4 FRAME SPRING	M.YAY-PG-004
30	FAUCET	M.MEK-TES-MSL-003
31	GASKET	M.CNT-PLS-KLN-002
32	THERMOSTATIC GAS VALVE	M.GAZ-VNA-PEL-001
33	GAS TANK	M.GAZ-DPO-PG-090
34	MASON 1/2	M.MEK-TES-INX-002
35	INSTALLATION PIPE 500 MM	YBR-KNX.DTG-KS-0003
36	BRACKET	JP.M.GAZ-TES-GLV-002
37	1/2-1/2 100 CM GAS FLEX	M.GAZ-TES-SPR-005
38	GAS FLEX Ø10 MM 60 CM 3/8	M.GAZ-TES-SPR-018
39	GAZ FLEKSI Ø6 MM 50 CM	M.GAZ-TES-SPR-034
40	15 CM LEG	M.AKS-AYK-INX-001
41	CONEXION SHEET	YSC-KNX.DTG-LZ-0107
42	CONNECTION PIN 50 MM	YTL-KNX.DTG-KS-0002
43	MOVEMENT SHAFT NUT	YTL-KNX.DTG-KS-0003
44	MECHANISM	ARA-KNX.PG9-0039
45	BUSH	YTL-KNX.DTG-KS-0006
46	BACK SHEET METAL	YSC-KNX.PG7-PN-0442
47	40 CM X 7 CM CHIMNEY	JP.M.AKS-DKM-KZN-013
48	CHASSIS	-

SPARE PART LIST-EXPLODING DRAWING



EMP.PLS.DTG.120

TILTING PAN (GAS)

I SPARE PART LIST-EXPLODING DRAWING

PRODUCT CODE: EMP.PLS.DTG.120		
NO	PRODUCT NAME	P.CODE
1	MECHANISM KIT	M.MUH-013
2	COVER HANDLE	YTL-KNX.KTG-KS-0003
3	PIPE 1700MM	YBR-KNX.DTG-KS-0007
4	TOP COVER	ARA-KNX.PG9-0042
5	NO:2 BAKALIT HANDLE	M.AKS-KLP-BKL-0003
6	POOL	ARA-KNX.PG9-0041
7	790.350*6P BURNER	M.GAZ-BRL-SMC-008
8	M4 Spark Plug	M.GAZ-CKM-KBJI-003
9	PILOT GROUP	M.GAZ-CKM-BUJI-002
10	M8*1200 THERMOELEMENT NO:18	M.GAZ-TRL-003
11	CHASSIS	-
12	FRONT PANEL	ARA-KNX.PG9-0040
13	TICKET	M.AKS-OZL-MTL-006
14	MOVEMENT ARM	YTL-KNX.DTG-KS-0004
15	471/15 RING	M.AKS-SKM-001
16	BEARING UCFL 204 RHB	M.RLM-YRL-001
17	TILTING ARM	M.AKS-KLP-DTG-001
18	TILTING ARM	M.AKS-KLP-END-004
19	LIGHTER GUARD	M.GAZ--PIEZ-KRM
20	BATTERY LIGHTER	M.GAZ-CKM-PIL-001
21	FRONT COVER SHEET	YSC-KNX.PG9-LZ-0504
22	BUTTON	M.AKS-DGM-EMP-024
23	1-8 BUTTON BUMPER	M.AKS-DGM-EMP-020
24	BUTTON SOCKET 8 MM	M.AKS-DGM-SKT-001
25	M4 FRAME SPRING	M.YAY-PG-004
26	FAUCET	M.MEK-TES-MSL-003
27	CABLE 1000MM	M.GAZ-CKM-KBL-002
28	GAS TANK	M.GAZ-DPO-PG-090
29	THERMOSTATIC GAS VALVE	M.GAZ-VNA-PEL-001
30	MASON 1/2	M.MEK-TES-INX-002
31	1/2-1/2 100 CM GAS FLEX	M.GAZ-TES-SPR-005
32	GAS FLEX Ø10 MM 70 CM 3/8	M.GAZ-TES-SPR-015
33	GAS FLEX Ø6 MM 60 CM	M.GAZ-TES-SPR-035
34	INSTALLATION PIPE 500 MM	YBR-KNX.DTG-KS-0003
35	BRACKET	JP.M.GAZ-TES-GLV-002
36	15 CM LEG	M.AKS-AYK-INX-001
37	MOVEMENT SHAFT NUT	YTL-KNX.DTG-KS-0003
38	CONEXION SHEET	YSC-KNX.DTG-LZ-0107
39	MECHANISM	ARA-KNX.PG9-0039
40	CONNECTION PIN 50 MM	YTL-KNX.DTG-KS-0002
41	BUSH	YTL-KNX.DTG-KS-0006
42	REAR SHEET	YSC-KNX.PG9-PN-0442
43	40 CM X 7 CM CHIMNEY	JP.M.AKS-DKM-KZN-013
44	3/8 16*1.5 M.8 0.75 L SHAPED PIPE	M.GAZ-TES-SRI-023
45	INJECTOR M8*0.75 Ø 3.00 MM.	M.GAZ-ENJ-NG-009
46	INJECTOR M8*0.75 Ø2.00 MM.	M.GAZ-ENJ-NG-010