

GRANITE TOP REFRIGERATED COUNTER

CONTENTS

A	GENERAL INFORMATION	Page 2
A1	PRODUCT DESCRIPTION	Page 3
A2	TECHNICAL INFORMATION	Page 3
A3	TRANSPORTATION	Page 4
A4	UNPACKING	Page 4
B	INSTALLATION	Page 4
C	SAFETY INSTRUCTIONS	Page 5
D	OPERATION	Page 6
E	CLEANING & MAINTENANCE	Page 7
F	TROUBLESHOOTING	Page 8
G	SPARE PART LIST- EXPLODING DRAWING	Page 9
H	ELECTRIC CIRCUIT SCHEMA	Page 13



GRANITE TOP REFRIGERATED COUNTER

A GENERAL INFORMATION

Before installing the appliance, read operation and maintenance instructions carefully. Wrong installation and part changing may damage the product or may cause injury on people. These are not in our company's responsibility to damage the appliance intentionally, negligence, detriments because of disobeying instructions and regulations, wrong connections. Unauthorized intervention to appliance invalidates the warranty.

1. This instruction manual should be kept in a safe place for future reference.
2. **Installation should be made in accordance with ordinances and security rules of that country by a qualified service personnel.**
3. This appliance has to be used by trained person.
4. Please turn off the appliance immediately in the event of malfunction or failure. The appliance should be repaired only by authorized service personnel. Please demand original spare part.

GRANITE TOP REFRIGERATED COUNTER

A1 PRODUCT DESCRIPTION

*The Professional Granite Refrigerated Counter ,that provides high efficiency has been designed to be used in industrial kitchen.

Product Code	Dimensions (mm)	Weight (kg)	Packaging Dimensions (mm)
EMP.160.80.01	1600x800x1020	250	1700x950x1250
EMP.210.80.01	2100x800x1020	305	2200x950x1250

A2 TECHNICAL INFORMATION

Product Code	Capacity (Lt)	Power (KW)	Operating Voltage (V)	Cable (mm ²)	Fuse (A)	Operat. Range (°C)
EMP.160.80.01	300	0,12	220-230	3x1,5	25	0 / +5
EMP.210.80.01	500	0,16	220-230	3x1,5	25	0 / +5

*Fermentation drawer capacity : 2 pieces 400x600 mm

*Tray grid capacity : 4 pieces 400x600 mm for each



GRANITE TOP REFRIGERATED COUNTER

A3 TRANSPORTATION

*This appliance can not be moved by hand from area to area. It must be moved on pallet with forklift truck.

A4 UNPACKING

*Please unpack the package according to the security codes and ordinances of current country and get rid from the pack. Parts which contacts with food are produced by stainless steel. All plastic parts are marked by material's symbol.

*Please check that all the parts of appliance had come completely and if they are damaged or not during the shipping.


B INSTALLATION

*Please place the product to straight and sturdy ground, please take necessary steps against possibility of overturn.

*Technician who will serve for installation and service for the appliance must be professional on this subject and must have installation and service licenses by the company.

*Connection to Electric Power Supply must be done by authorized person.

*Please be sure that the voltage connected to appliance must be equal with the voltage which is on appliance's label.

 This appliance must be connected to an earthed outlet in accordance with safety rules and standard.











*Appliance's earthing must be connected to earthing line on panel which is nearest to electric installation.

*Connection to the main fuse and leak current fuse must be done in accordance with the current regulations.

*If the 2 appliance will be placed adjacently, there must be at least 2 cm space between them. The Condensation is prevented.

GRANITE TOP REFRIGERATED COUNTER

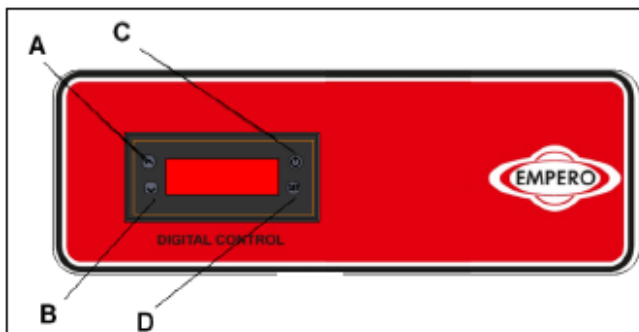
C SAFETY INSTRUCTIONS

-  *Do not use the appliance in insufficient lighted place.
-  *Do not touch the moving attachments while the appliance operates.
-  *Do not install the appliance in the presence of flammable or explosive materials.
-  *Do not operate the appliance when the machine is empty.
-  *Do not load so less or more than appliance's capacity.
-  *Do not attempt to use the appliance without suitable protective equipments.
-  *Because of any reason if there is a fire or flame flare where the appliance is used, turn off all gas valves and electric contactor switch quickly and use fire extinguisher. Never use water to extinguish the fire.
-  *All the damages because of not having earthing connection will not be on warranty.
-  *Prevent the appliance to take sunshine directly.
-  *Do not place heavy objects on to the appliance.

GRANITE TOP REFRIGERATED COUNTER

D OPERATION

*Control Panel;



- A : Degree increase
- B : Degree reduce
- C : Indicator ON/OFF
- D : SET approval button

*Operating;

- Clean the inner and outer surface of the appliance with warm cloth before first use. Then clean with wet cloth and dry.
- Plug in the appliance.
- Set the temperature off the appliance with up-down arrows.
- Operate the appliance for 12 hours when it is empty. at first use .Meanwhile do not open the lids.
- Provide the doughs that will be fermented to wait at fermentation drawer.
- Place the materials into the appliance. Cooling of the materials will get effected ,if the door is opened often or if the door is left opened
- You can prepare the doughs on granite stand.

GRANITE TOP REFRIGERATED COUNTER

E CLEANING & MAINTENANCE

➤ **CLEANING AND MAINTENANCE AFTER EVERY USE**

- Always turn off the appliance and disconnect from the power supply before cleaning.
- Clean the inner surfaces and shelves with moist cloth and then dry after every evacuation of material.
- Clean the surface of granite stand with moist soapy cloth. Then clean it with wet cloth and dry.
- Clean the fermentation drawers and shelf trays after every use.
- Clean the control panel with dry cloth.
- Pay attention the cleaning materials to be hygienic.
- Do not use abrasive cleaning chemicals as these can leave harmful residues.
- Do not clean the appliance by spraying water directly ,otherwise electric motor may get damaged.

➤ **PERIODIC CLEANING AND MAINTENANCE**

- Maintenance should be done by qualified person.
- Get the periodic maintenance of the appliance once in every 15 days.
- Clean the condenser with a plastic rigid brush once in a month.
- Clean the fan in periodic times.
- Make periodic maintenance of the fire-extinguisher.

GRANITE TOP REFRIGERATED COUNTER

F TROUBLESHOOTING

THE APPLIANCE DOESN'T OPERATE	<ol style="list-style-type: none">1. Check if the appliance is plugged in.2. Check the electrical connections and voltage.3. Check if the fuse is on or off.
--------------------------------------	--

THE APPLIANCE IS NOISY	<ol style="list-style-type: none">1. Check the motor.2. If the connection pipes contact with compressor,remove it.
-------------------------------	---

THE APPLIANCE STOPPED	<ol style="list-style-type: none">1. The appliance can stop due to low voltage.In this situation check the voltage.2. If there is any leakage current at electric connections,the appliance stops.In this situation call the authorized service.
------------------------------	---

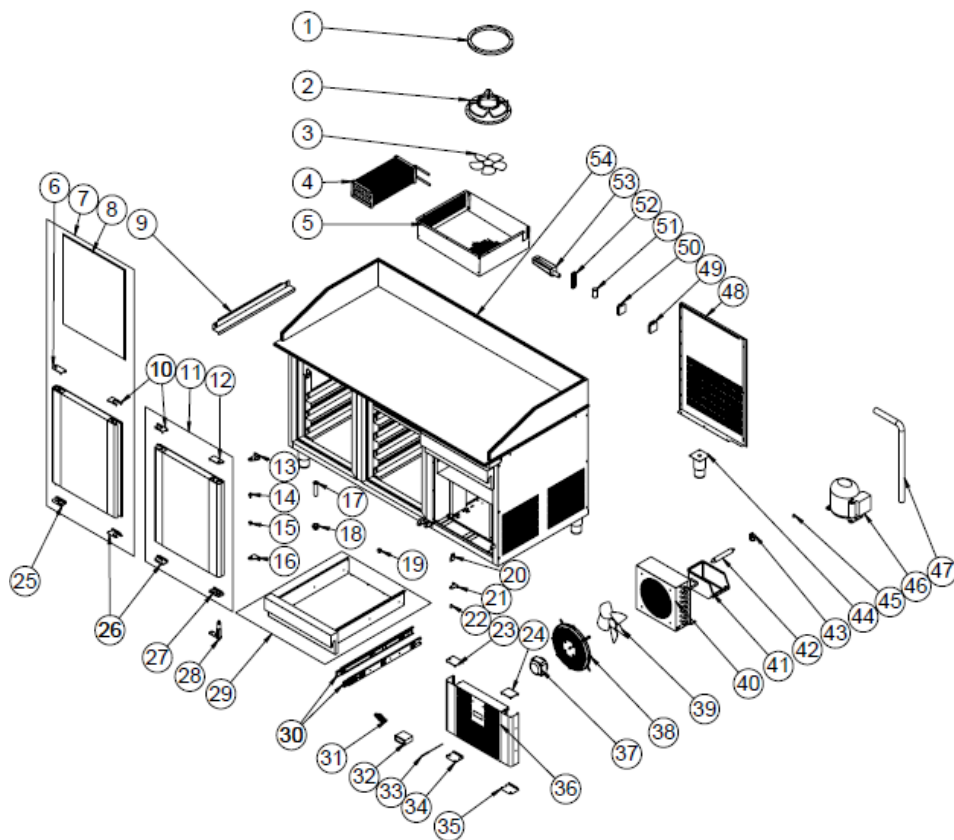
INNER TEMPERATURE IS TOO HIGH	<ol style="list-style-type: none">1. Clean the condenser.2. Check the air conditioning.3. If the hot product is inserted,take it off.4. If the door is opened,close it.
--------------------------------------	--

- | |
|--|
| <ul style="list-style-type: none">• If cooling and fermentatation are not done at suitable quality• If any function of security doesn't work<ul style="list-style-type: none">➤ Do not use the appliance. |
|--|

***If these problems are still going on,contact with our authorized services.**

GRANITE TOP REFRIGERATED COUNTER

G SPARE PART LIST- EXPLODING DRAWINGS



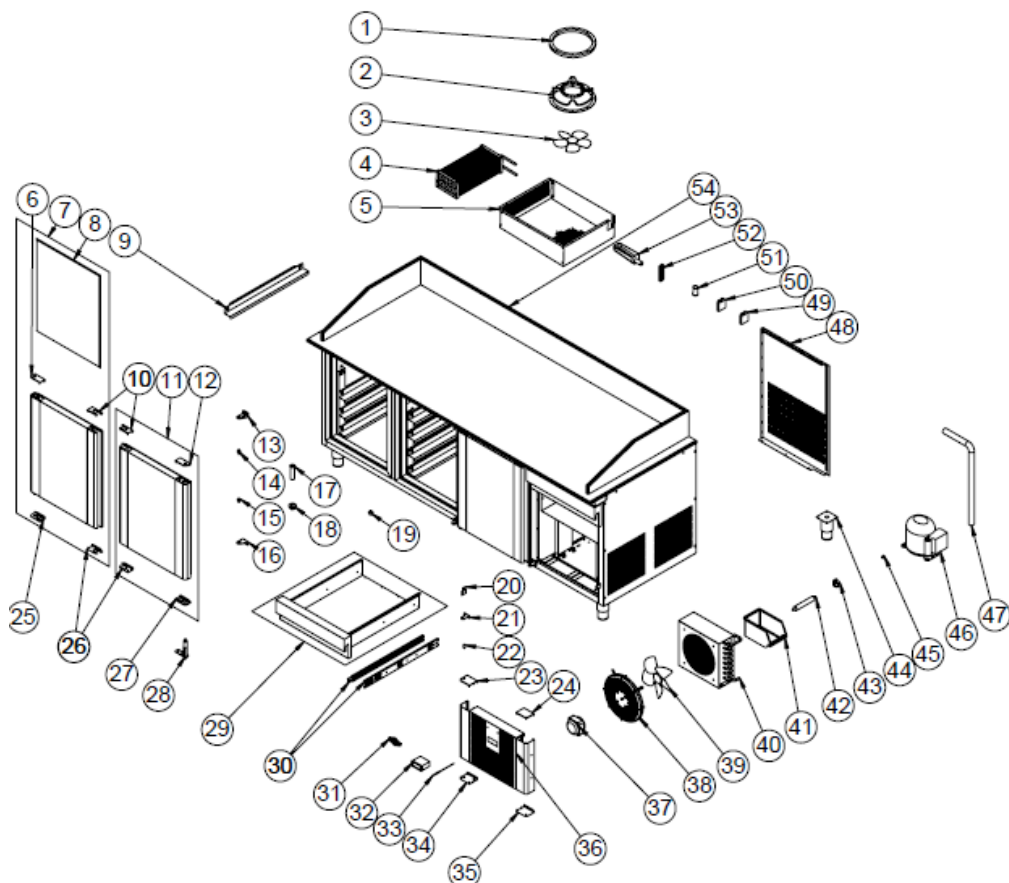
PRODUCT CODE: EMP.160.80.01		
NO	PRODUCT NAME	P.CODE
1	SUPPOSITORY	M.CNT-ERK-002
2	FAN CIRCLE PLASTIC	M.ENJ-ERK-PLS-001
3	WING	M.ELK-HVL-FKN-004
4	EVAP	M.SOG-EVP-001
5	HOOD SHEET	YSC-ERK.1680-PN-0111
6	HINGE TOP PLASTIC LEFT	M.ENJ-ERK-PLS-110
7	COVER LEFT	ARA-ERK.1560-AKB TEZGAH KAPAK-
8	GASKET (590 - 472)	M.CNT-ERK-001
9	SLIDE SHEET	YSC-ERK.1680-PN-0077

GRANITE TOP REFRIGERATED COUNTER

10	HAND PLASTIC TOP	M.PLS-ERK-029
11	COVER RIGHT	ARA-ERK.1560-TEZGAH KAPAK-
12	HINGE TOP PLASTIC RIGHT	M.ENJ-ERK-PLS-108
13	UPPER RIGHT HINGE SHEET	M.AKS-MNT-SC-001
14	PIN	M.AKS-MNT-SC-005
15	BUSH PLASTIC	M.ENJ-ERK-PLS-022
16	BOTTOM LEFT HINGE SHEET	M.AKS-MNT-SC-002
17	PIPE	M.ENJ-ERK-PLS-002
18	NUT	M.ENJ-ERK-PLS-024
19	MAGNET	M.MIK-SRT-ERK-001
20	HOLDER PLASTIC	M.ENJ-ERK-PLS-009
21	ENGINE HINGE SHEET	YSC-ERK.1680-LZ-0017
22	HINGE PIN	YTL-ERK.BQ-KS-0004
23	TOP PLASTIC LEFT	M.ENJ-ERK-PLS-111
24	TOP LEFT PLASTIC	M.PLS-ERK-031
25	HINGE BOTTOM PLASTIC LEFT	M.ENJ-ERK-PLS-109
26	HAND PLASTIC BOTTOM	M.PLS-ERK-030
27	HINGE BOTTOM PLASTIC RIGHT	M.ENJ-ERK-PLS-107
28	HINGE	M.AKS-MNT-SC-007
29	DRAWER BOILER	ARA-ERK.1680-0001
30	RAIL	M.MUH-055
31	METAL LABEL	M.AKS-OZL-MTL-002
32	THERMOSTAT	M.ELK-EDM-DGT-043
33	PROP	ERK.M.ELK-EDM-DGT-012
34	BOTTOM PLASTIC LEFT	M.ENJ-ERK-PLS-112
35	BOTTOM LEFT PLASTIC	M.PLS-ERK-032
36	ENGINE DOOR SHEET	YSC-ERK.1680-PN-0066
37	FAN MOTOR	M.ELK-MTR-FMT-014
38	FAN CIRCLE WIRE	ERK.M.MUH-001
39	WING	M.ELK-HVL-FKN-002
40	1/3 CONDENSER	M.SOG-KDS-002
41	TOOLS	M.PLS-ERK-038
42	DRAWER	M.SOG-DRY-004
43	HANDCUFF	M.PLS-ERK-003
44	FOOT	ERK.M.AKS-AYK-INX-001
45	SIBO	M.SOG-MUH-001
46	COMPRESSOR	M.SOG-KMS-018
47	HOSE	HTS-HRT-001
48	REAR OUTER SHEET	YSC-ERK.1680-PN-0064
49	TERMINAL	M.ELK-KLM-013
50	TERMINAL	M.ELK-KLM-018
51	GASKET	M.CNT-ERK-006
52	PROP PLASTIC	M.ENJ-ERK-PLS-017
53	LEECH	M.ENJ-ERK-PLS-003
54	CHASSIS	-

GRANITE TOP REFRIGERATED COUNTER

G SPARE PART LIST- EXPLODING DRAWINGS



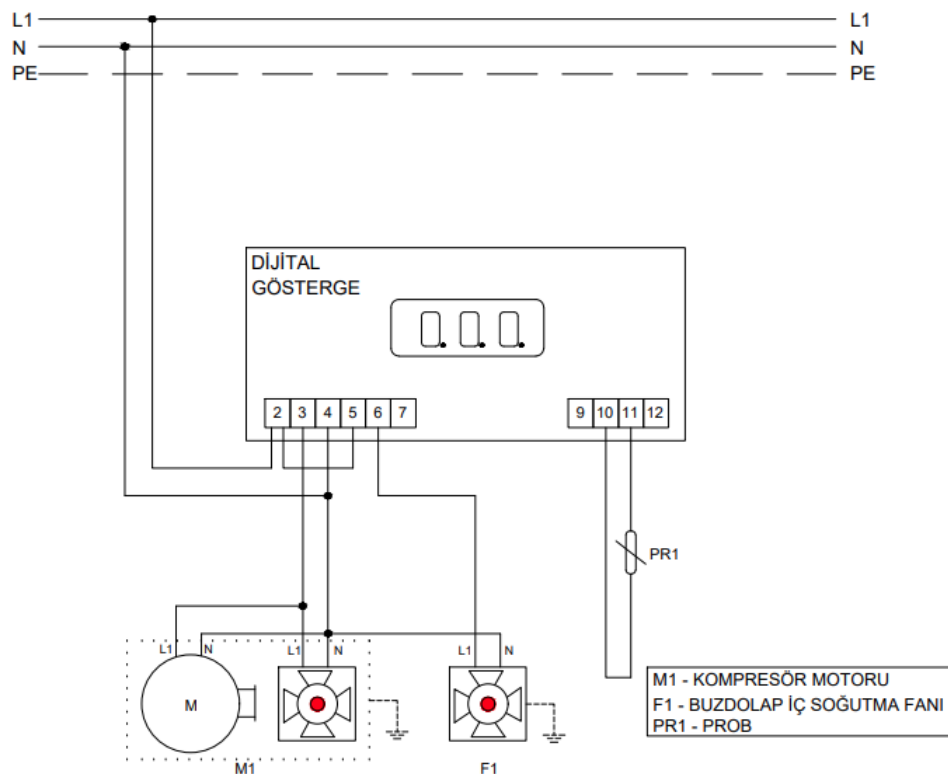
PRODUCT CODE: EMP.210.80.01		
NO	PRODUCT NAME	P.CODE
1	SUPPOSITORY	M.CNT-ERK-002
2	FAN CIRCLE PLASTIC	M.ENJ-ERK-PLS-001
3	WING	M.ELK-HVL-FKN-004
4	EVAP	M.SOG-EVP-001
5	HOOD SHEET	YSC-ERK.1680-PN-0111
6	HINGE TOP PLASTIC LEFT	M.ENJ-ERK-PLS-110
7	COVER LEFT	ARA-ERK.1560-AKB TEZGAH KAPAK-

GRANITE TOP REFRIGERATED COUNTER

8	GASKET (590 - 472)	M.CNT-ERK-001
9	SLIDE SHEET	YSC-ERK.1680-PN-0077
10	HAND PLASTIC TOP	M.PLS-ERK-029
11	COVER RIGHT	ARA-ERK.1560-TEZGAH KAPAK-SAG-
12	HINGE TOP PLASTIC RIGHT	M.ENJ-ERK-PLS-108
13	UPPER RIGHT HINGE SHEET	M.AKS-MNT-SC-001
14	PIN	M.AKS-MNT-SC-005
15	BUSH PLASTIC	M.ENJ-ERK-PLS-022
16	BOTTOM LEFT HINGE SHEET	M.AKS-MNT-SC-002
17	PIPE	M.ENJ-ERK-PLS-002
18	NUT	M.ENJ-ERK-PLS-024
19	MAGNET	M.MIK-SRT-ERK-001
20	HOLDER PLASTIC	M.ENJ-ERK-PLS-009
21	ENGINE HINGE SHEET	YSC-ERK.1680-LZ-0017
22	HINGE PIN	YTL-ERK.BQ-KS-0004
23	TOP PLASTIC LEFT	M.ENJ-ERK-PLS-111
24	TOP LEFT PLASTIC	M.PLS-ERK-031
25	HINGE BOTTOM PLASTIC LEFT	M.ENJ-ERK-PLS-109
26	HAND PLASTIC BOTTOM	M.PLS-ERK-030
27	HINGE BOTTOM PLASTIC RIGHT	M.ENJ-ERK-PLS-107
28	HINGE	M.AKS-MNT-SC-007
29	DRAWER BOILER	ARA-ERK.1680-0001
30	RAIL	M.MUH-055
31	METAL LABEL	M.AKS-OZL-MTL-002
32	THERMOSTAT	M.ELK-EDM-DGT-043
33	PROP	ERK.M.ELK-EDM-DGT-012
34	BOTTOM PLASTIC LEFT	M.ENJ-ERK-PLS-112
35	BOTTOM LEFT PLASTIC	M.PLS-ERK-032
36	ENGINE DOOR SHEET	YSC-ERK.1680-PN-0066
37	FAN MOTOR	M.ELK-MTR-FMT-014
38	FAN CIRCLE WIRE	ERK.M.MUH-001
39	WING	M.ELK-HVL-FKN-002
40	1/3 CONDENSER	M.SOG-KDS-002
41	TOOLS	M.PLS-ERK-038
42	DRAYER	M.SOG-DRY-004
43	HANDCUFF	M.PLS-ERK-003
44	FOOT	ERK.M.AKS-AYK-INX-001
45	SIBO	M.SOG-MUH-001
46	COMPRESSOR	M.SOG-KMS-018
47	HOSE	HTS-HRT-001
48	REAR OUTER SHEET	YSC-ERK.1680-PN-0064
49	TERMINAL	M.ELK-KLM-013
50	TERMINAL	M.ELK-KLM-018
51	GASKET	M.CNT-ERK-006
52	PROP PLASTIC	M.ENJ-ERK-PLS-017
53	LEECH	M.ENJ-ERK-PLS-003
54	CHASSIS	-

GRANITE TOP REFRIGERATED COUNTER

H ELECTRIC CIRCUIT SCHEMA



M1-COMPRESSOR ENGINE
F1-REFRIGERATOR INTERNAL COOLING FAN
PR1-PROBE